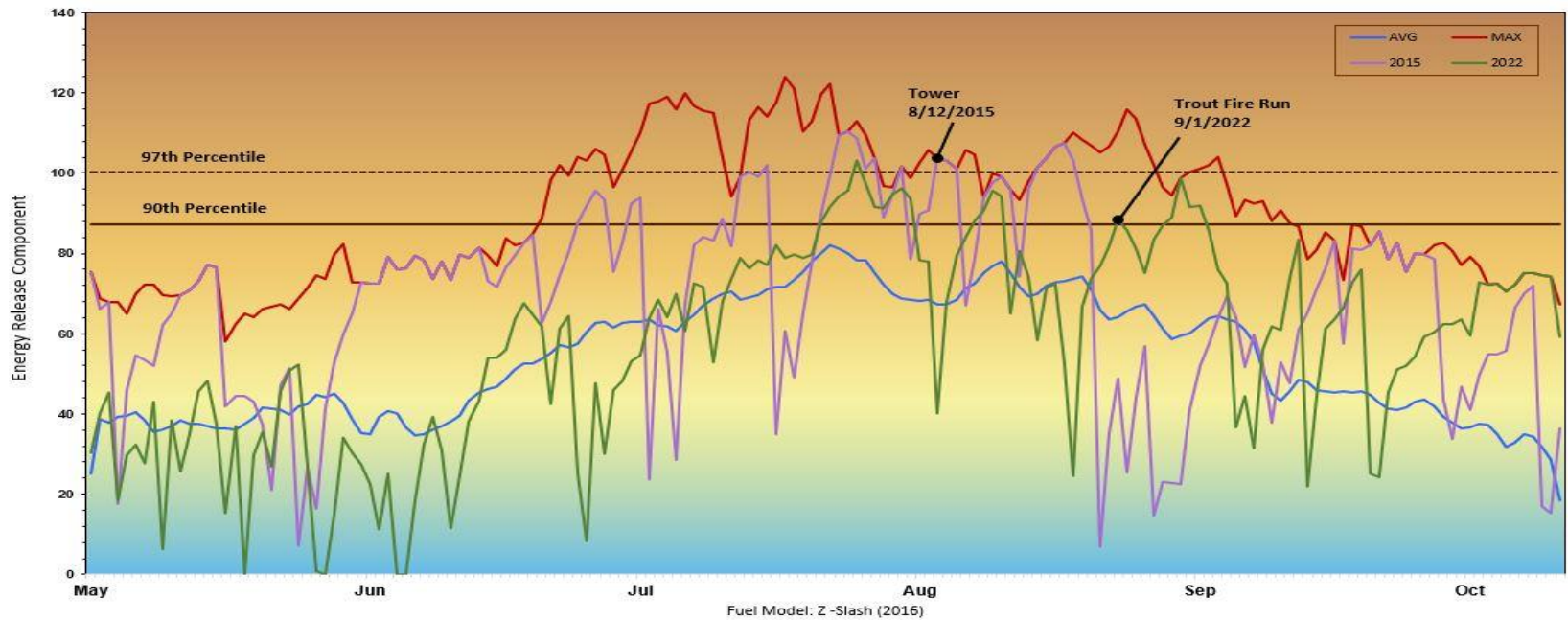


North Mountains-North Idaho Zone



FIRE DANGER AREAS: NIZ-North Mountains

FORECAST ZONE: NOAA ID101

North Mountain FDRA SIG RAWs

100107 Saddle Pass

100204 Priest Lake

100208 Hoodoo

Stations meet NWCG Weather Station Standards



Daily Indices

GRAPH INTERPRETATION: Energy Release Component (ERC)

ERC gives seasonal trends calculated from temperature, humidity, and precipitation duration.

EXTREME – Use Extreme Caution

HIGH – Watch for Change

MODERATE – Lower Potential, but always be aware.

AVG – Mean ERC by day, over 15 years.

MAX – Highest ERC by day for 2009-2023.

90th Percentile – 10% of 2445 days from 2009-2023 had an ERC above 87.

97th Percentile – 3% of 2445 days from 2009-2023 had an ERC above 100.

LOCAL THRESHOLDS – WATCHOUT: Combinations of any of these factors can greatly increase fire behavior.

20' Wind Speed > 15 mph

RH < 20%

Temperature > 80 F

1000-Hour Fuel Moisture < 15%

PAST EXPERIENCE:

NM FDRA often has ignitions resulting in holdovers or small fires that do not have significant growth for several days. Be aware when weather/fuels conditions align, even without recent ignitions or recent growth.

2015 Tower fire (25,685 acres) ignition 8/12/2015 under drought conditions. Passing cold front with wind gusts > 25 mph, temps > 90F and RH < 15% produced a 6.5-mile 1 day run in heavy timber.

2022 Trout fire (4,785 acres) ignition 8/21/2022. First significant run 9/1/2022, Bonner RAWs recording; temps > 95F, RH < 25%, wind 10 mph gust to 19 with ERC @ 90%.

